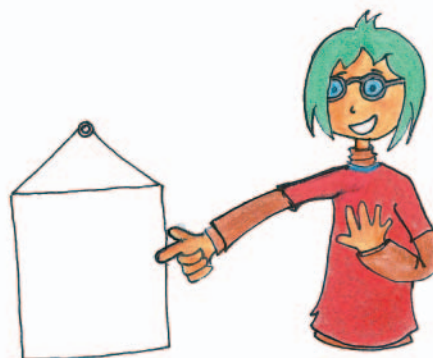
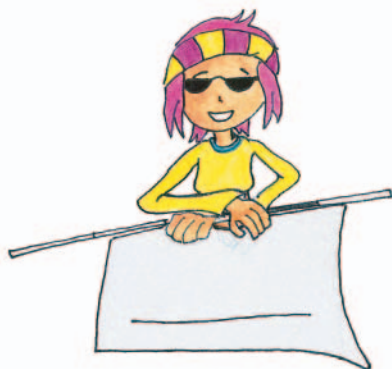
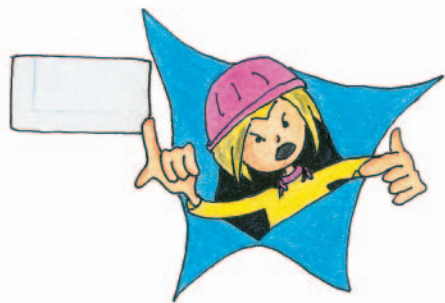




# FICHAS PARA TRABAJAR CON LOS ALUMNOS



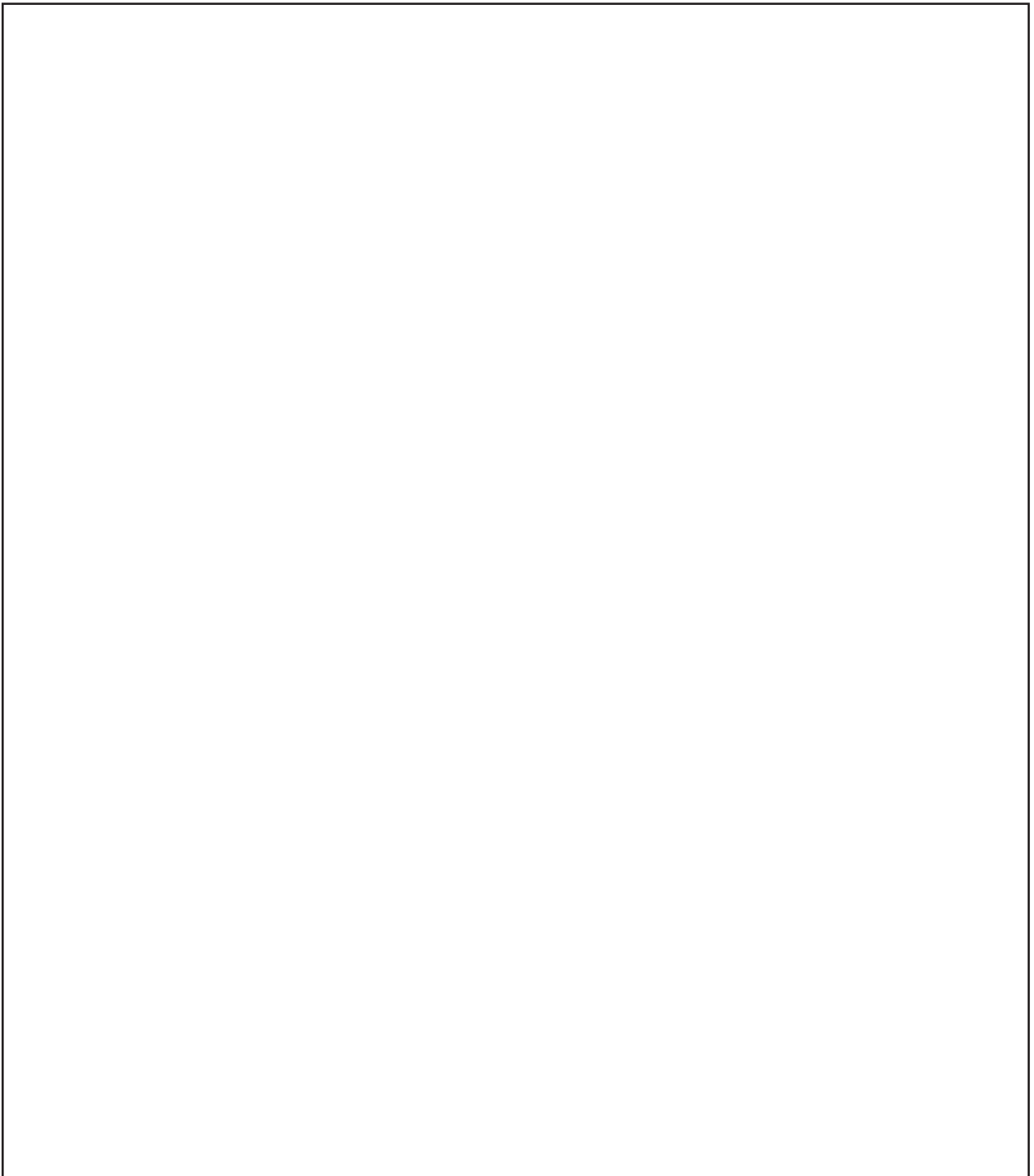


# Abecedario Braille

A large empty rectangular box intended for writing the Braille alphabet.



# Abecedario Dactilológico





# Inventa

A large rectangular area containing 20 horizontal dotted lines for writing, arranged in ten pairs. The lines are evenly spaced and extend across most of the width of the page.





# Puzzle



# Poema

(Color)

.....  
.....

(Vista)

.....  
.....

(Olfato)

.....  
.....

(Oído)

.....  
.....

(Gusto)

.....  
.....

(Tacto)

.....  
.....

(Emoción)

.....  
.....

